



# PATHFINDER HOMES RANGE OF LUXURY RESIDENTIAL AND HOLIDAY LODGES

*Innovation • Inspiration • Imagination*







# ABOUT US



## **A New Era of Innovation and Excellence**

From innovative designs to a reimagined website launching in 2025, Pathfinder is committed to staying at the forefront of the industry. Our recent showcases—like the HIGH VIEW lodge at the Great Caravan, Motorhome and Holiday Home Show and collaborations with leading holiday parks, reflect our drive to bring elegance, comfort, and modern features into every home we create.

## **Craftsmanship and Quality You Can Trust**

Since 1958, Pathfinder has built a reputation for creating exceptional residential park homes and lodges, each crafted to the highest standards. With our core values of Innovation, Inspiration, and Imagination, we work alongside you to design a home that's uniquely yours, ensuring that your sanctuary is not only stylish but feels like home.

***Pathfinder Homes—Leading in Quality and Innovation for Over 60 Years***

[www.pathfinderhomes.co.uk](http://www.pathfinderhomes.co.uk)







# HOLIDAY LODGES

*Discover perfection within our lodges as they become the perfect home, away from home*



# THE HIGHVIEW *a relaxed haven with contemporary design*



**The High View** lodge blends style and function seamlessly. A welcoming hallway with hidden storage and oak-finish flooring leads to a well-equipped, ultra-modern kitchen. The elevated living area, with expansive glazing and a cosy fireplace, offers stunning views year-round. Bedrooms are thoughtfully designed, with a luxurious master en-suite and a versatile second bedroom. The distinctive Canexel exterior brings a contemporary, natural appeal.

**Built to BS3632 standard | Split-level lounge & dining area | Custom exterior colour options | UPVC windows, doors & trim | Soffit lighting over French doors**

# THE ASTBURY *immerse yourself in the serene ambiance*



**Built to BS3632 standard | Black uPVC windows, doors, fascias and soffits | Open-plan living area | All integrated appliances**

**The Astbury** Lodge combines tropical-inspired decor with earthy tones and rich wood finishes. Its open-plan living area is perfect for relaxation, while spacious bedrooms with walk-in wardrobes and spa-like bathrooms offer luxurious comfort. A true sanctuary of style and serenity, designed for peaceful escapes.



# THE LOFT

*classic, elegant & comfortable*

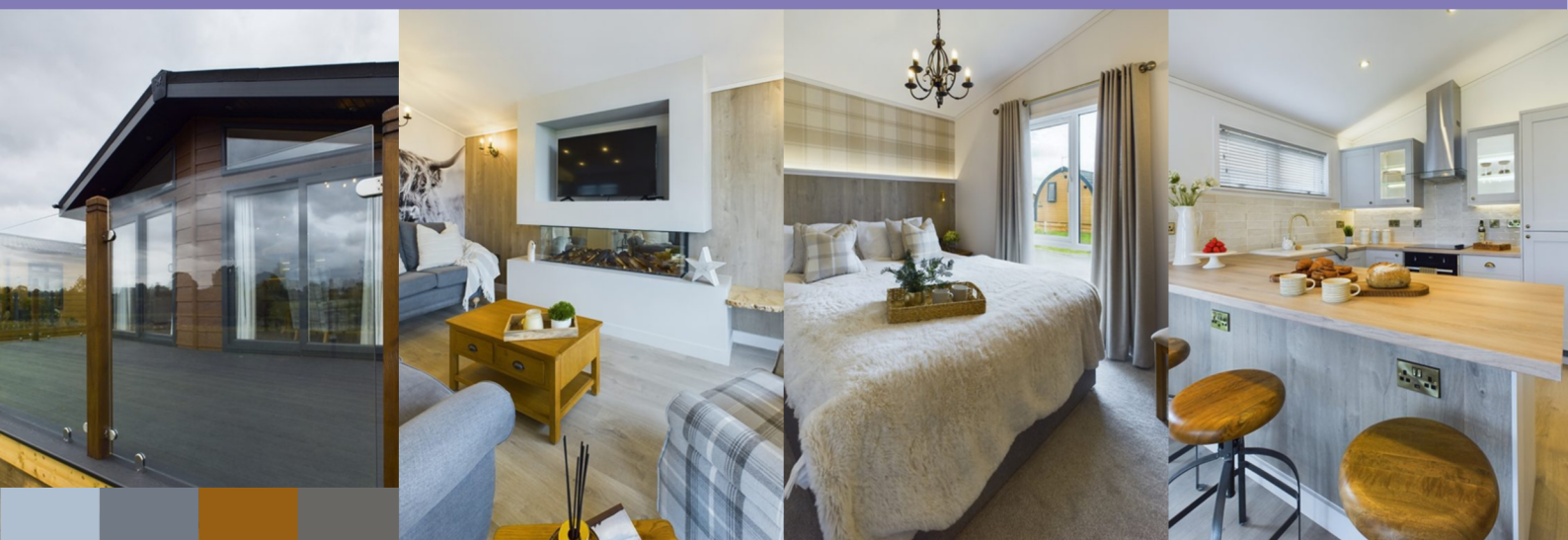


**The Loft** is a luxurious two-bedroom, two-bath lodge featuring a light-filled, open-plan living area with dark industrial accents and sleek metal details. The en-suite master bedroom includes a walk-in wardrobe and a lavish bathroom, exuding a raw, urban style. The twin room across the hall combines industrial touches with cosy comfort for a relaxing retreat.

**Built to BS3632 standard |  
Black uPVC windows,  
doors, fascias and soffits |  
Open-plan living area | All  
integrated appliances**

# THE KEEPERS

*finders keepers...*



**Built to BS3632 standard |  
Thermowood shiplap cladding  
| Black uPVC windows, doors,  
fascias and soffits | Feature  
wall mural artwork | Built-in  
wine cooler**

**The Keepers** Lodge offers a serene escape. With its angled gable capturing scenic views, the Keepers Lodge offers open-plan living with cosy wood accents and a striking contemporary fireplace. The country kitchen, complete with modern appliances, complements a functional entryway with ample storage. The master suite features a walk-through wardrobe and en-suite, while a spacious guest room and luxurious main bath complete this countryside escape.



# THE TENBY *embodies a serene and rejuvenating haven*



**The Tenby** Lodge is a modern beach-style retreat, perfect for holiday or residential living. Its design features soft colors and airy textiles, creating a relaxing atmosphere. The open layout maximizes natural light and blends indoor and outdoor spaces, while thoughtful details in furniture and decor provide versatile areas for both relaxation and social gatherings.

**Built to BS3632 standard | UPVC windows, doors, fascias and soffits | Feature external lights | Furnished with luxury interior details**

# THE HAWTHORNE *the original and still the best*



**Built to BS3632 standard | Centre lounge with Bi-Fold doors | Two large roof lights | Offered in a choice of external finishes | Luxury interior styling**

**The Hawthorne** recently re-designed opts for a modern industrial style featuring an open plan layout, high ceilings, and full-height windows for a bright, spacious feel. Luxurious bedrooms with king-size beds and stylish en suites complete this bold, elegant lodge, perfect for both residential and holiday living, a firm favourite with lodge parks in the UK.



# THE RETREAT

*classic, elegant & comfortable*



**The Retreat** offers a perfect blend of elegance and comfort, creating a true escape into nature. With rustic wood, red brick, and cosy touches, the open-plan living area features a charming fireplace and French windows for abundant natural light. The master bedroom is a private haven with warm wood accents, while the en-suite and main bathroom add a touch of refined simplicity. The Retreat is designed as a peaceful sanctuary, ideal for unwinding.

**Built to BS3632 standard | Dark grey UPVC double glazed doors and windows | Feature exterior lights**

# THE WILLOW

*effortlessly stylish and practically designed*



**Built to BS3632 standard | Dark grey UPVC double glazed doors and windows | Feature exterior lights**

**The Willow** combines style and practicality, inspired by Devon's natural beauty. Its symmetrical design features vaulted ceilings and large windows, creating a bright, inviting space. The luxurious lounge and modern kitchen make it perfect for socialising, while both spacious bedrooms offer queen-size beds and en-suites, embodying the ideal lodge lifestyle.



# THE SILVERTON *a fusion of organic and industrial design*



**The Silverton** is a luxurious Pathfinder lodge designed for year-round relaxation, featuring elegant cedar cladding and a grey slate-style roof that complements any setting. The bright open-plan living area, with large windows and wood flooring, creates a cosy atmosphere, while the dining space includes a stylish breakfast bar. With two spacious bedrooms, including a master with an en-suite wet room, the Silverton is perfect for both weekend getaways and summer retreats.

**Built to BS3632 standard | Cedar exterior cladding, fascias and soffits | Galvanised gutters and down pipes | Furnished from a wide choice of interior finishes**

# THE TUSCANY *a little taste of Italy*



**Built to BS3632 standard | Canaxel exterior | 2 Black gold wall lights | Feature glazing throughout | 2 Velux roof lights | Electric wood burning stove**

**The Tuscany** Lodge offers rustic charm with modern comforts, featuring a cosy living area with plush sofas and a wood-burning stove. The inviting dining room is perfect for family gatherings, and the well-equipped kitchen caters to larger meals. Bedrooms include stylish features, with the master suite having an en-suite. Ideal for relaxation, the Tuscany is perfect for any lodge park.





# RESIDENTIAL PARK HOMES

*Enjoy luxury living in a Pathfinder Park Home.  
Each home embodies style and practicality for an idyllic  
lifestyle at your chosen Residential Park*



# THE MERLEY *the original and still the best*



**The Merley** Park Home combines country charm with a Scandinavian twist, featuring a bright open-plan living area with clean lines and gold accents, perfect for relaxation and entertaining. It offers two spacious bedrooms, including a luxurious primary suite with a walk-in wardrobe and en-suite. The elegant bathrooms provide a spa-like experience, making The Merley an ideal retreat for modern living.

**Built to BS3632 standard | Black uPVC windows, doors, fascias and soffits | Open plan living area | All integrated appliances**

# THE BELLE MAISON *savoir vivre*



**Built to BS3632 standard | 3 pairs of uPVC French doors | 3 large uPVC Velux windows | Comes in Canexel cladding with a choice of colour | Exterior shutters**

**The Belle Maison** embodies French elegance with vaulted ceilings and Velux windows that brighten the dining room for sunset meals. The cosy lounge features a spacious sofa and electric wood-burning stove, while the modern kitchen includes a stylish breakfast bar area. The twin bedroom is complemented by a luxurious master suite with a super king-size bed and an en-suite shower room with a rainfall shower. This exquisite home combines classic charm and luxury, ideal for both residential and holiday living.



# THE LIGHTHOUSE

*illuminating the shore...*

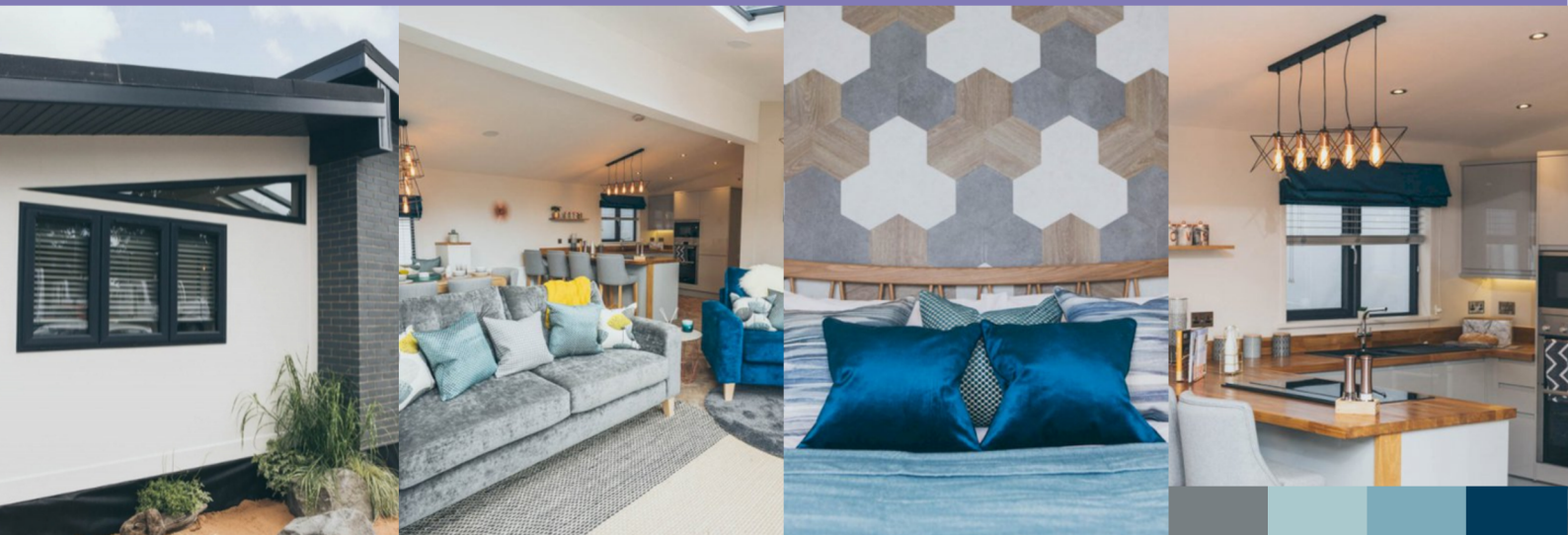


**The Light House** is a luxurious two-bedroom home perfect for permanent living or holidays. It features elegant interiors with abundant natural light, a modern fireplace, and stylish furnishings. The attractive exterior boasts a feature entrance with white stipple render and dark grey window frames, offering high-quality craftsmanship at a competitive price.

**Built to BS3632 standard | Exterior CanExcel cladding & Resitex | Dark Grey UPVC double glazed doors and windows | Brushed Chrome exterior lights**

# THE EVOLUTION

*a revolutionary creation*



**Built to BS3632 standard | Choice of external finishes | UPVC windows, doors, fascias and soffits | Plasterboard walls throughout**

**The Evolution**, a luxurious residential home featuring a stunning grey slate exterior with full-length glass walls and bi-fold doors. Inside, enjoy an open-plan living area with designer parquet flooring and a cosy snug. The high-end kitchen boasts Bosch appliances, while both bedrooms offer stylish comfort, with the master suite featuring a lavish bathroom. The Evolution redefines park home living with its innovative design and opulent finishes.



# THE GATEHOUSE *classic park home living*



**The Gatehouse** is a stunning residential home flooded with natural light, creating an uplifting and airy atmosphere. The open-plan dining and living area features large windows that enhance the spacious design, complemented by two comfortable three-seater sofas and a soothing fireplace. With a blend of traditional and modern styles, this home exudes sophistication and elegance, making it an ideal choice for any residential park or private land.

**Built to BS3632 standard | Exterior brick effect and resitex | Feature Bay Windows | Luxury interior design styling**

## WE ALSO OFFER A LUXURY **BESPOKE SERVICE...**

With Pathfinder Homes you can decide on every aspect of the design – from the exterior finish to the kitchen sink!

We've worked hand in hand with customers and parks alike to design homes around their individual requirements.



**Get in touch today to begin your journey to luxury lodge or park home ownership.**



@pathfinder\_homes



@pathfinder-homes

01626 833 799 | [sales@pathfinderhomes.co.uk](mailto:sales@pathfinderhomes.co.uk) | [www.pathfinderhomes.co.uk](http://www.pathfinderhomes.co.uk)













01626 833 799 | [sales@pathfinderhomes.co.uk](mailto:sales@pathfinderhomes.co.uk) | [www.pathfinderhomes.co.uk](http://www.pathfinderhomes.co.uk)